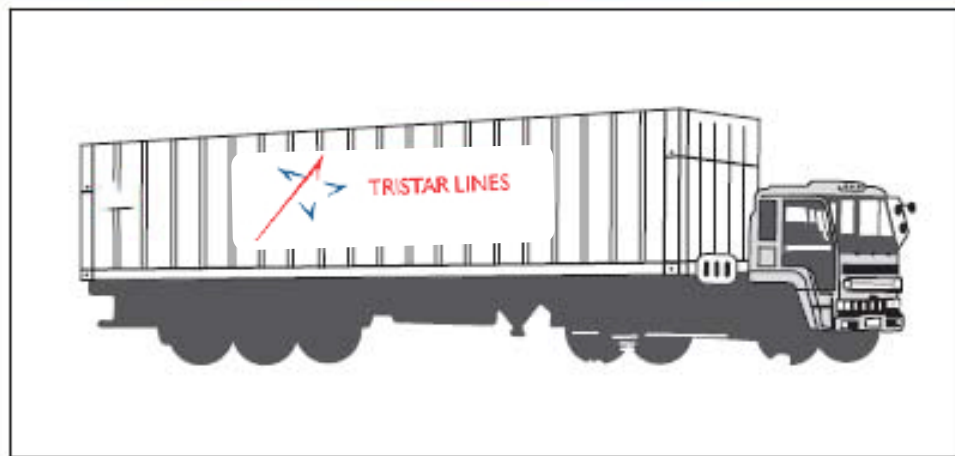
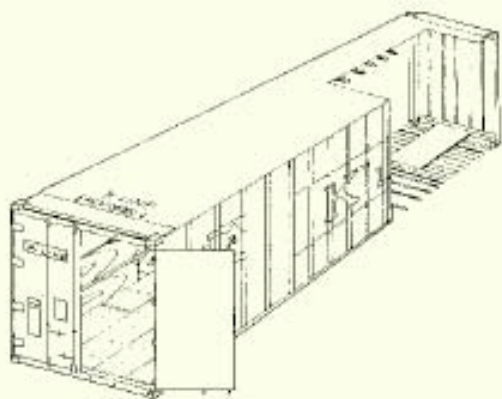


# 40' Dry Freight Containers



Height	Material	Tare Weight (kg/lbs)	Max* Cargo Cap. (kg/lbs)	Door Opening		Interior Dimensions			Interior Cube (m <sup>3</sup> /cft)
				Width (mm/ft)	Height (mm/ft)	Length (mm/ft)	Width (mm/ft)	Height (mm/ft)	
8' - 6"	Steel	3,770	28,730	2,340	2,280	12,032	2,352	2,393	67.6 2,390
		8,421	63,339	7' 8"	7' 6"	39' 6"	7' 9"	7' 10"	

Remarks \* : Subject to road and rail weight limitations.  
 : Above are typical figures for this type of containers.